

THEO WANNE

Facing Measuring Kit

"The Wanne Measuring System was built to more simply and accurately measure woodwind mouthpieces." - Theo Wanne

DESIGN

ACCURATE AND SIMPLE TO USE

The glass and feeler gauges are marked in incremental metric steps.

- The glass gauge is marked in actual millimeters.
- The feeler gauges are marked in a straight forward metric series: .05mm, .25mm, .5mm, .75mm, 1mm, 1.5mm, 2mm, 2.5mm, and 3mm

USE

HOW TO MEASURE A MOUTHPIECE FACING

1. Place the glass plate (gauge) on the table of the mouthpiece such that it extends over the facing curve much like a reed would.
2. Align the '0' line of the glass gauge with the tip of the mouthpiece.
3. Place a feeler gauge between the glass and the facing of the mouthpiece.
4. Slide the feeler gauge back until it is snug between the glass and mouthpiece facing.
5. Record the distance marked on the glass gauge, and the feeler gauge size used.
Example: The mouthpiece shown to the right has a facing 18mm back from the tip with a .25mm feeler gauge.
6. Repeat with each feeler gauge: 0.05mm, 0.25mm, 0.5mm, 0.75mm, 1mm, 1.5mm, 2mm, 2.5mm, and 3mm.
7. You can now plot the facing curve of your mouthpiece.



Theo WanneTM
CLASSIC MOUTHPIECES

Wanne Inc.

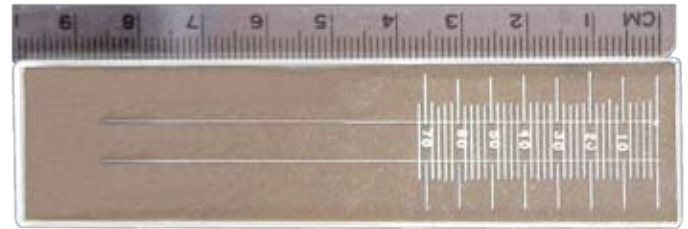
MAIL: 8 Par Place West, 118 Sudden Valley, Bellingham WA 98229 USA
EMAIL: info@theowanne.com WEB: www.theowanne.com

BENEFITS

BENEFITS OVER PRIOR MEASURING SYSTEMS

Unleash Your Soul

- **WANNE** glass gauges are marked in actual millimeters. When the gauge reads 24 the measurement really is 24 millimeters.
- **OTHER** glass gauges are marked in millimeters times two. The actual measurement is the number shown divided by two. For example, when the glass gauge reads 48 then the real measurement is 24 millimeters.
- **WANNE** feeler gauges are marked in even, metric increments. The series reads: 0.05mm, 0.25mm, 0.5mm, 0.75mm, 1mm, 1.5mm, 2mm, 2.5mm, and 3mm.
- **OTHER** feeler gauges are made in U.S. customary units (inches) marked as 'thousandths of an inch'. For example: 0.0015, 0.01", 0.024", 0.034", 0.050", 0.063", 0.077", 0.093" and 0.109". Other sets use different sizes than these though.
- **WANNE** feeler gauges are exact matches to their intended metric equivalents. For example 1/4mm reads and measures exactly 0.25mm.
- **OTHER** feeler gauges marked in thousands of an inch are not exact matches to their U.S. customary unit equivalents. For example 5/64" reads 0.077" but is actually 0.078125.
- Also **OTHER** gauge sets are sold with a 0.015" gauge OR a .02" gauge. These gauges are a 1/640" equivalent. 1/640" actually measures 0.015625" which is closer to 0.015" but also round up to 0.02".
- **WANNE** gauges are all marked in metric units.
- **OTHER** sets are a mix of metric and U.S. customary units. The mix of measuring systems makes them complicated and confusing to use.



"We demand the highest standards in every aspect of the manufacture of our accessories. We create only the very best products for the functionally demanding and aesthetically conscious musician."

- Theo Wanne